



**RGGI**

**Electricity Sector Modeling Results**

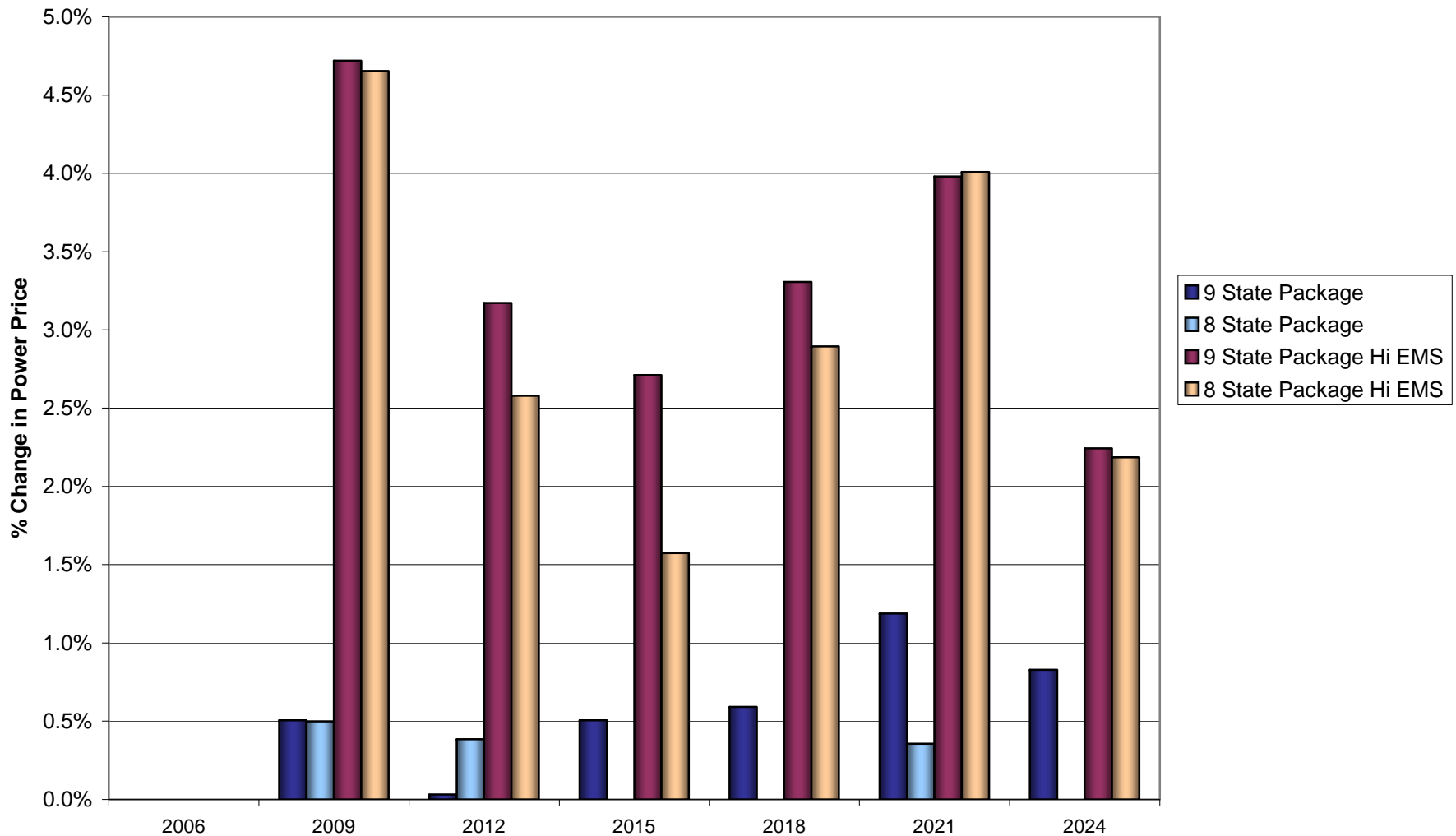
***8-State Sensitivity Results***

**December 21, 2005**

**ICF Consulting**

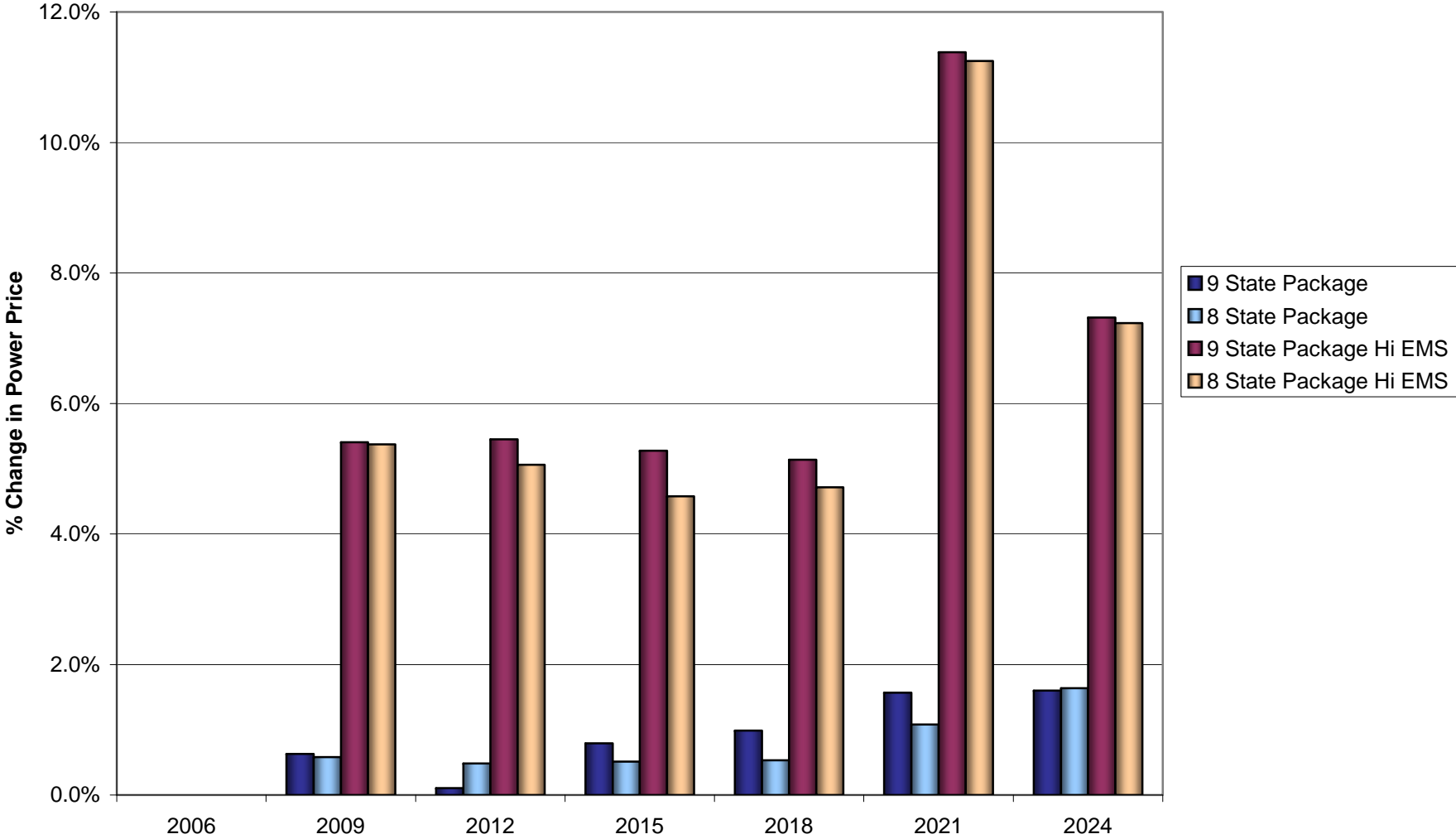
# VT Power Price Changes

(from Standard and High Emission Reference Cases)



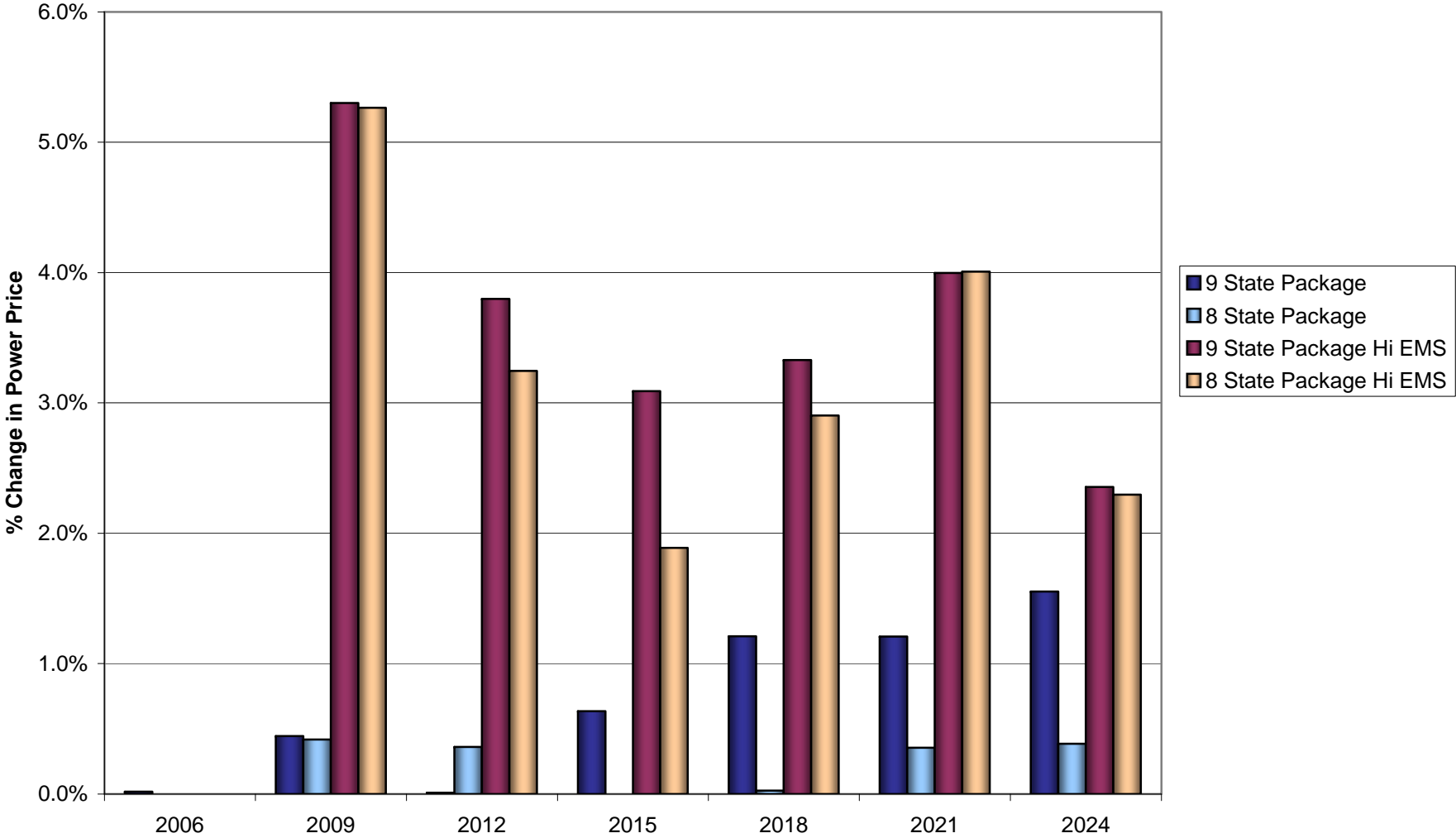
# ME Power Price Changes

(from Standard and High Emission Reference Cases)



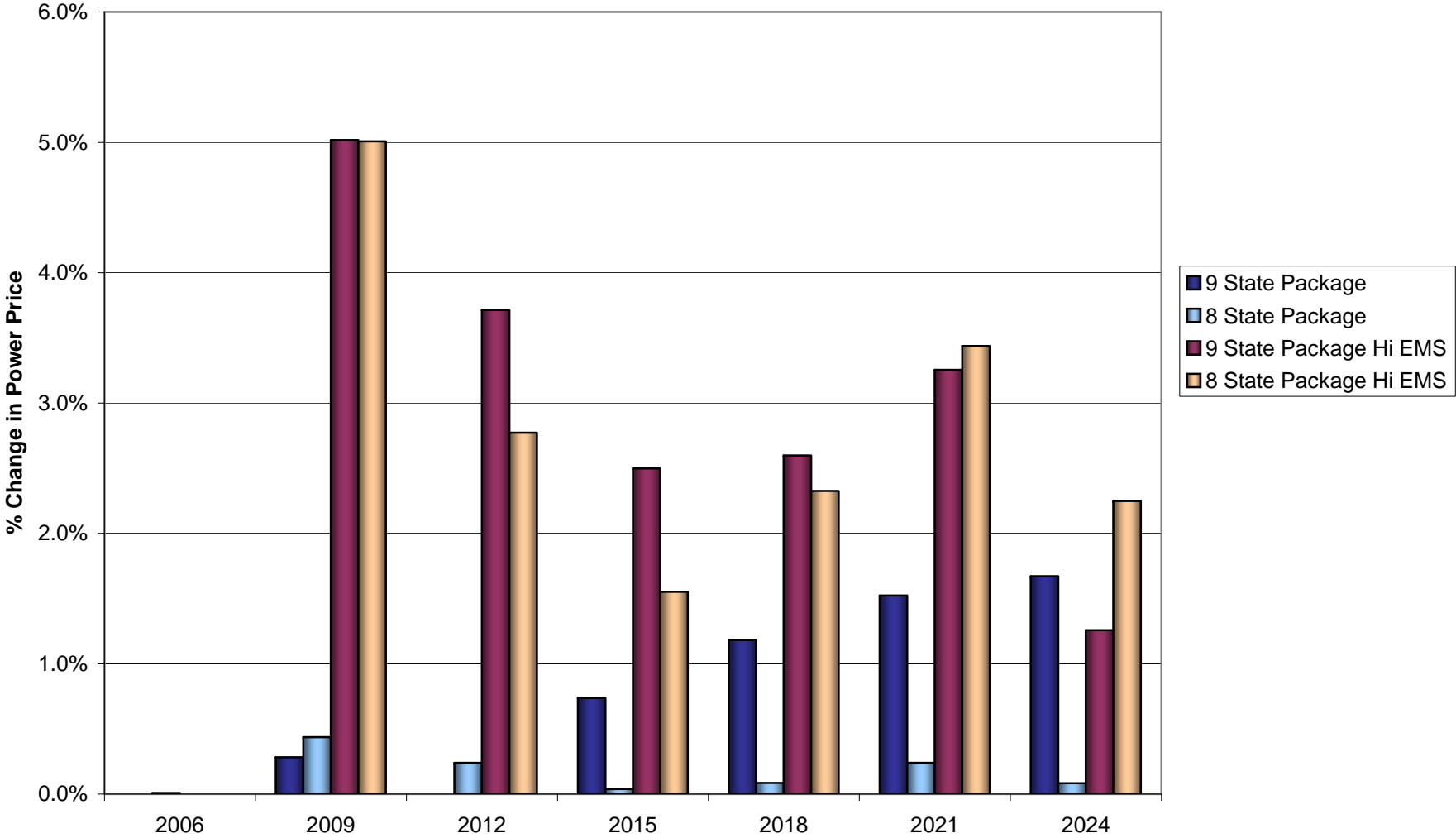
# NH Power Price Changes

(from Standard and High Emission Reference Cases)



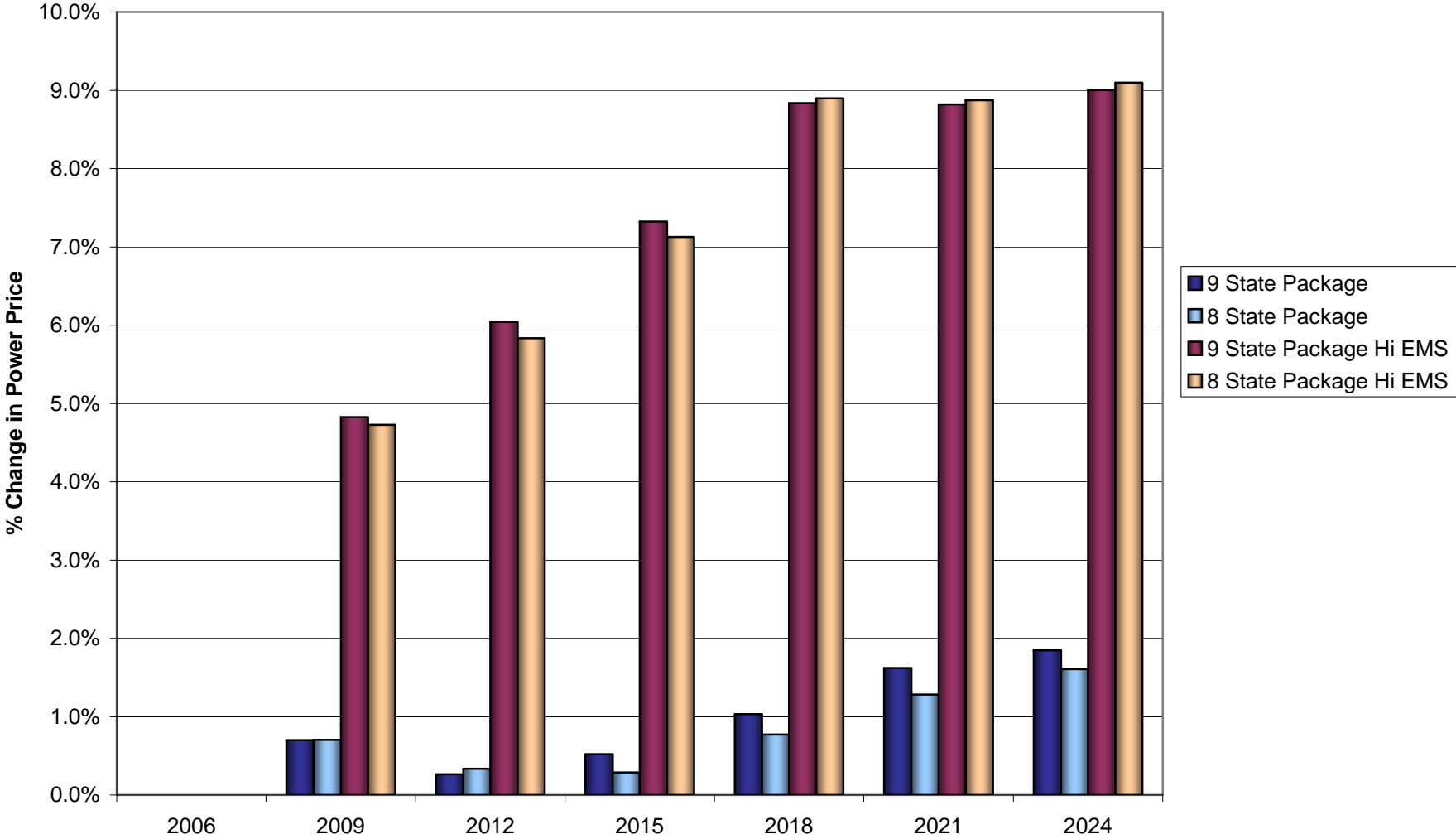
# MA Power Price Changes

(from Standard and High Emission Reference Cases)



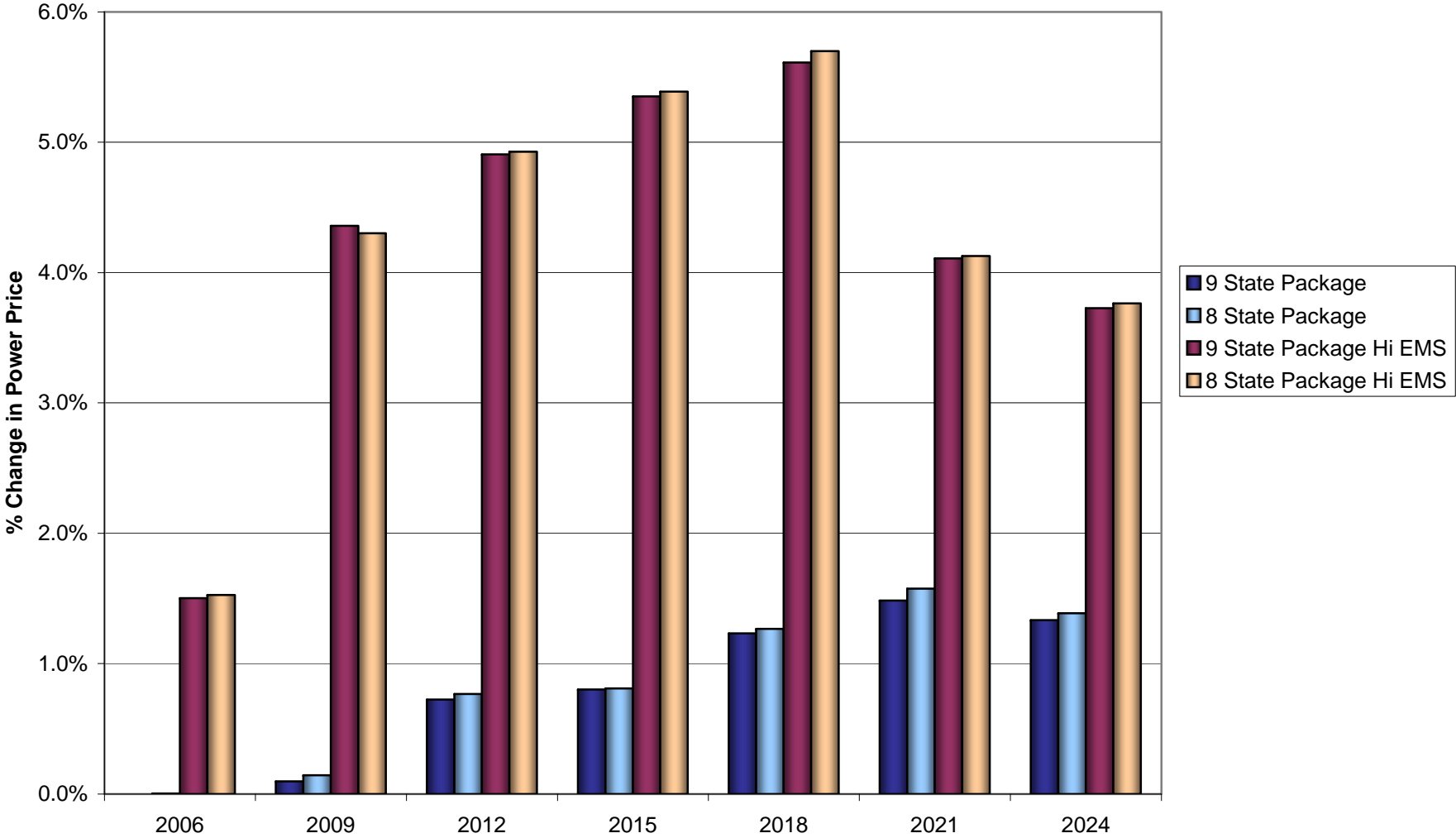
# CT Power Price Changes

(from Standard and High Emission Reference Cases)



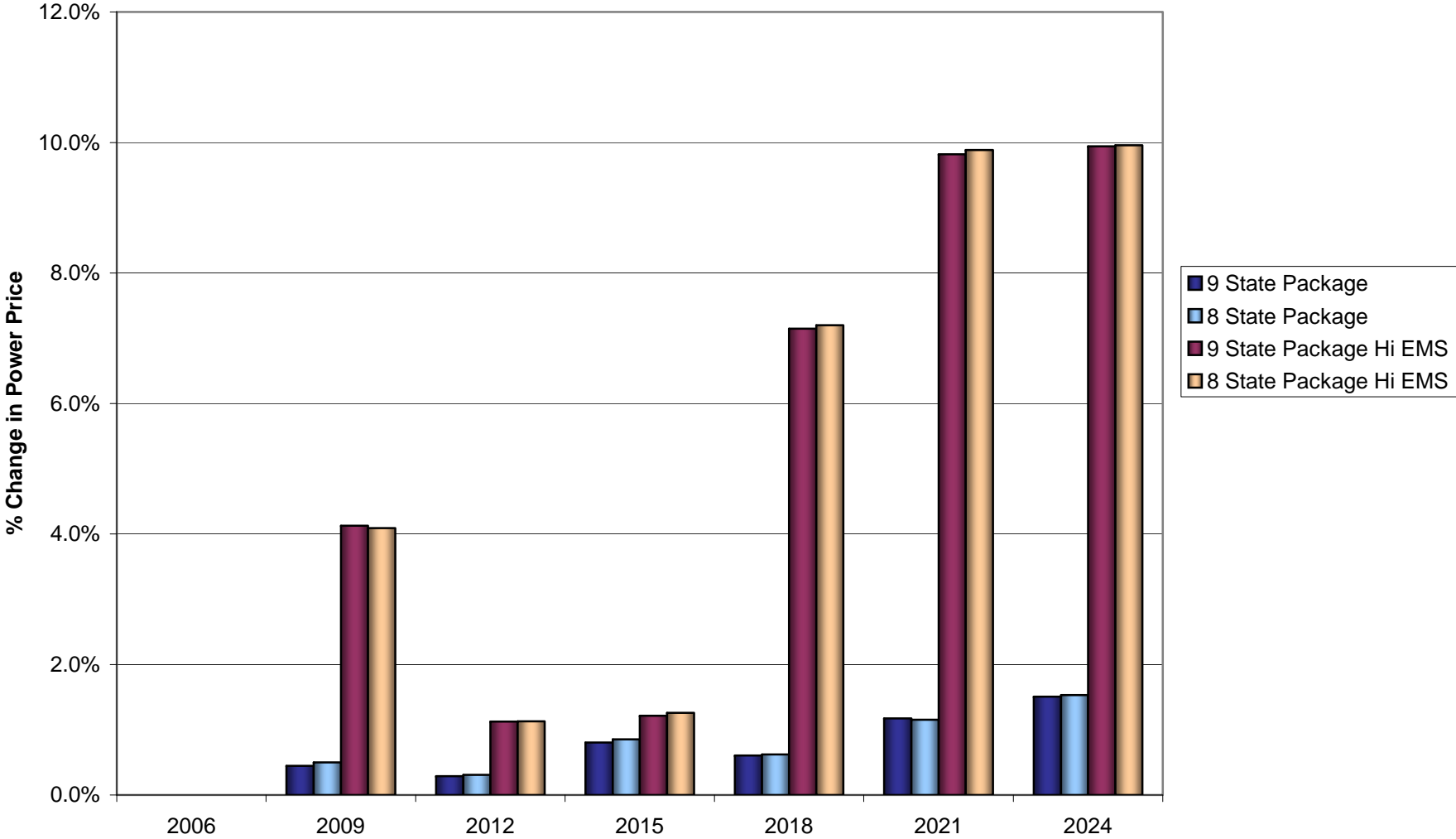
# NY Power Price Changes

(from Standard and High Emission Reference Cases)



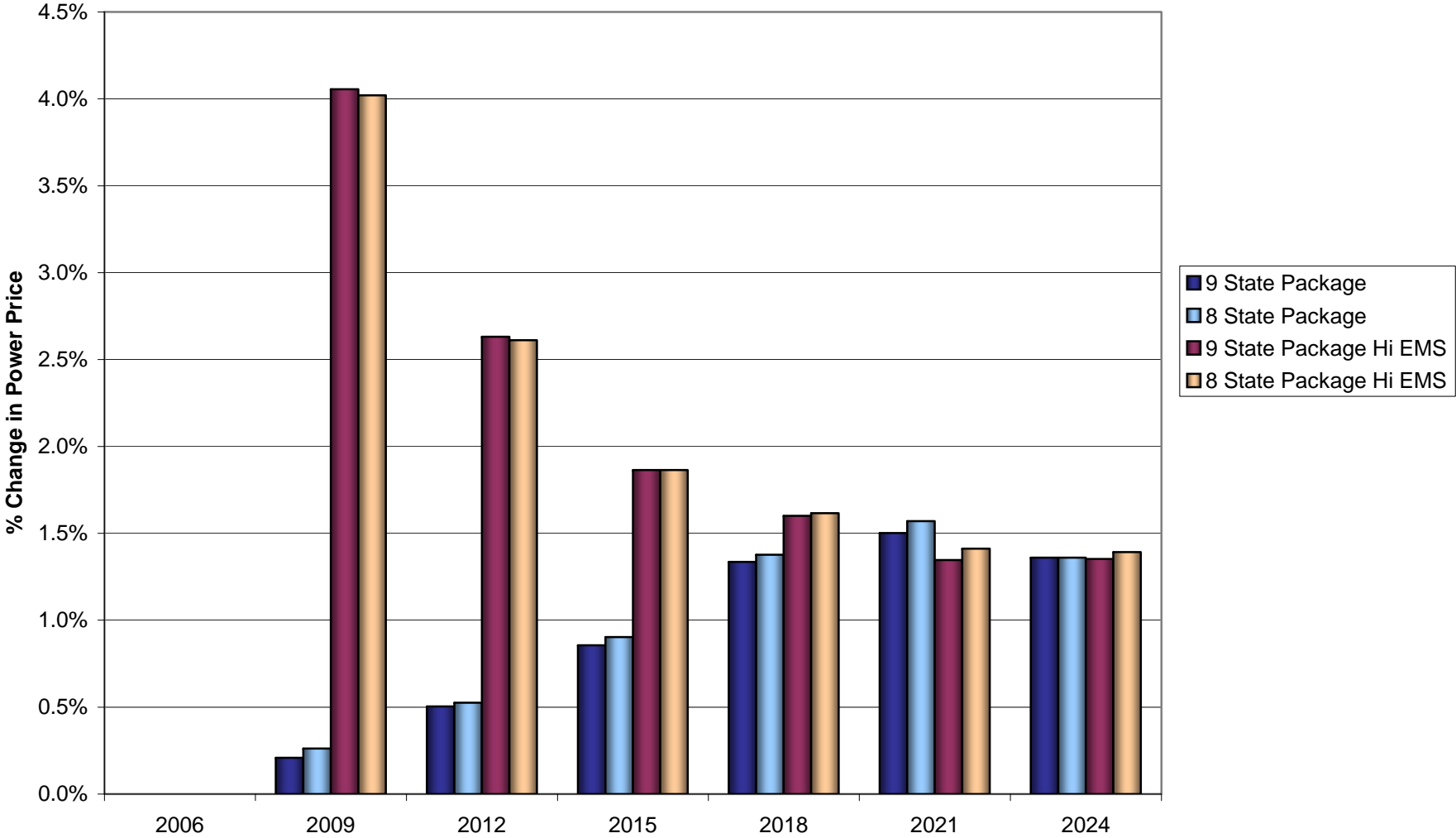
# NJ Power Price Changes

(from Standard and High Emission Reference Cases)

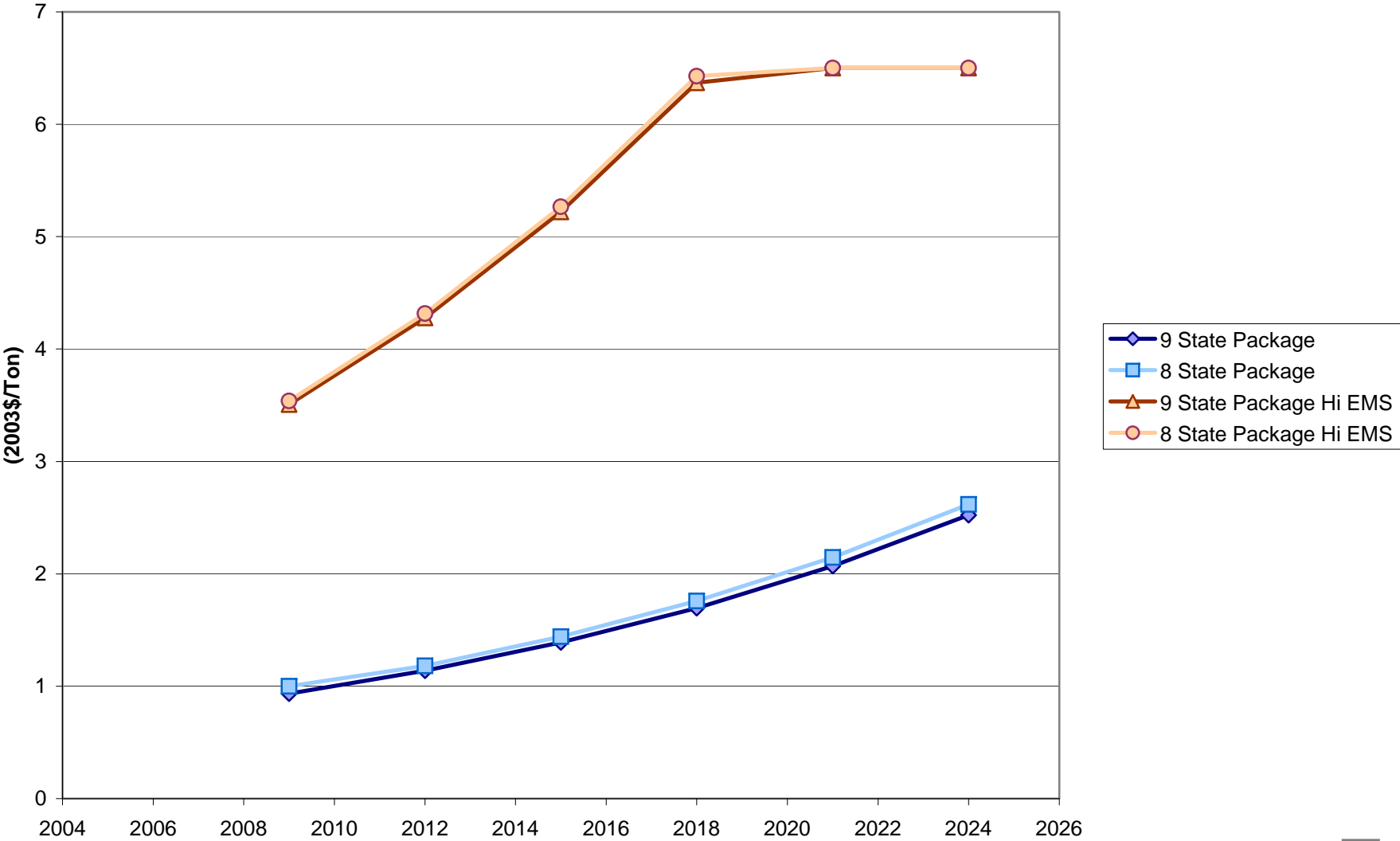




# DELMARVA Power Price Changes (from Standard and High Emission Reference Cases)

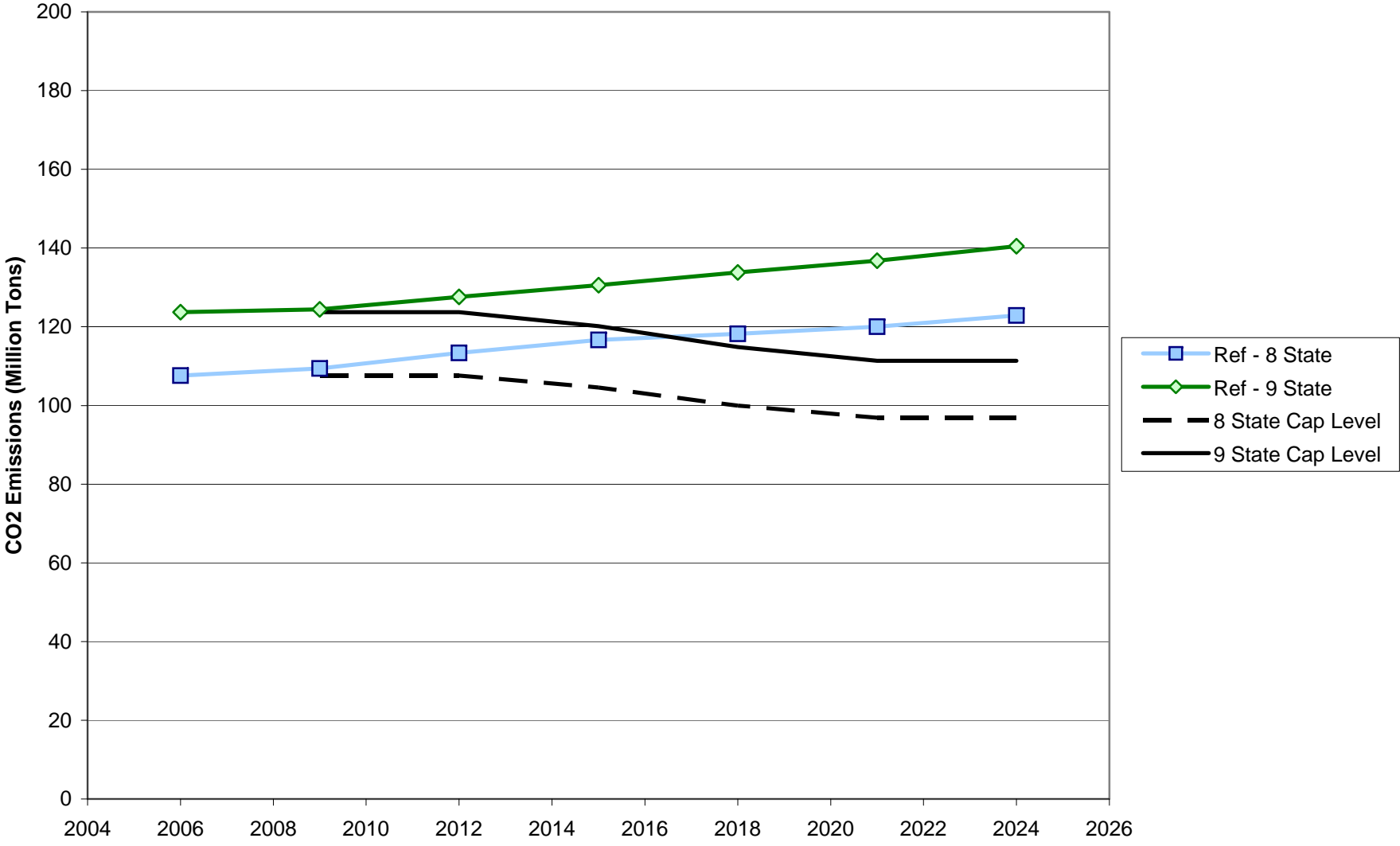


# RGGI CO<sub>2</sub> Allowance Prices



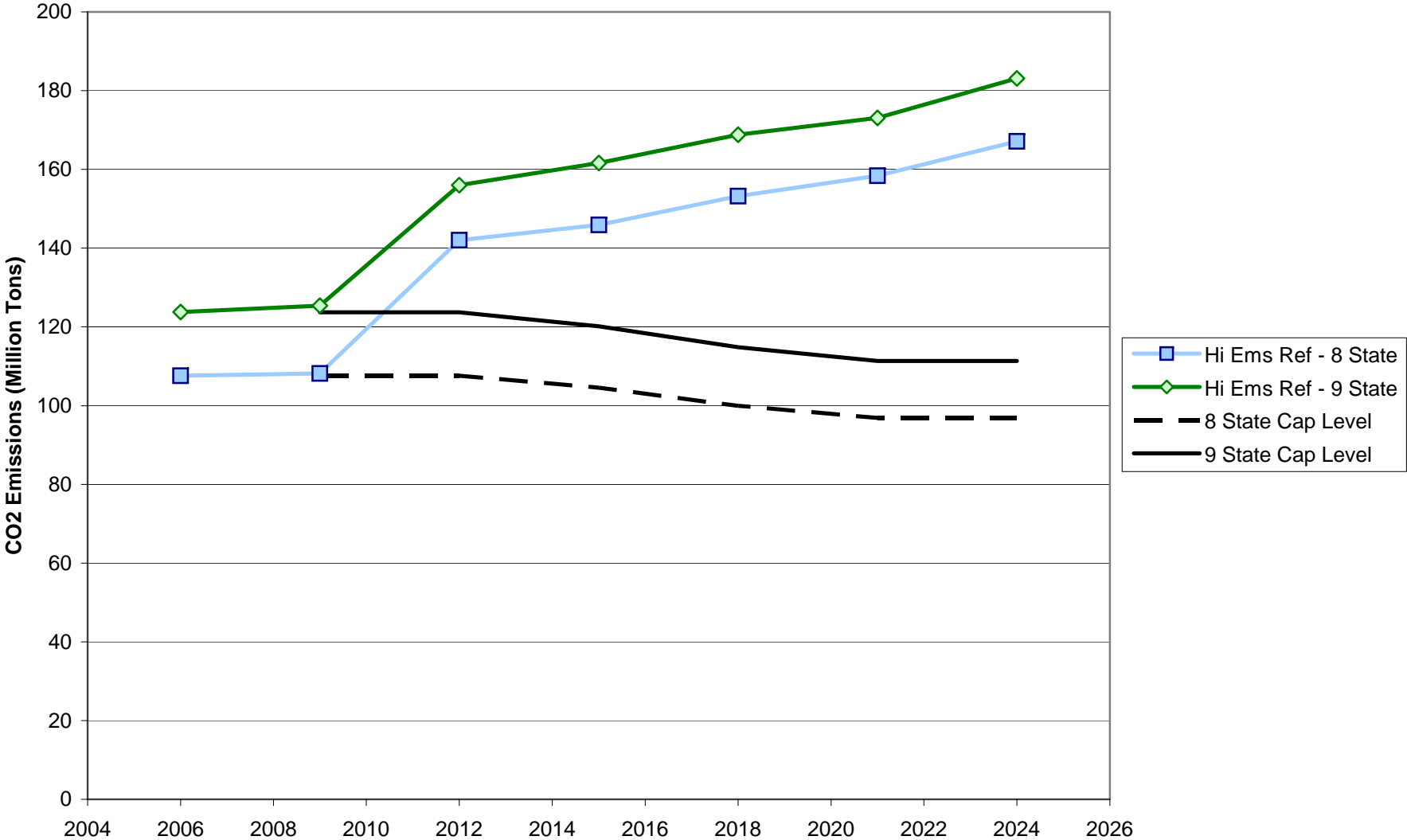
# RGGI CO<sub>2</sub> Emissions and Cap Levels

## Reference Scenario with and without MA



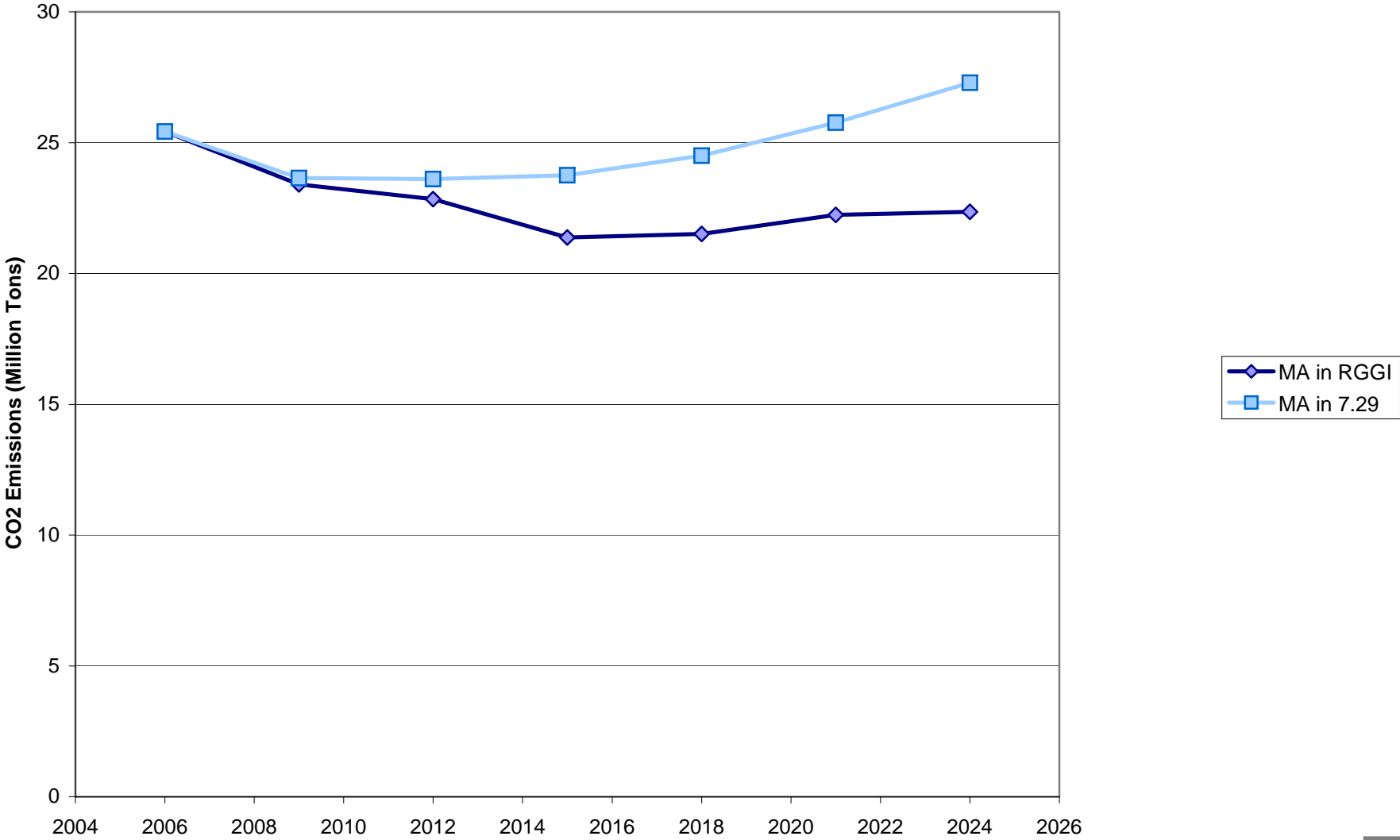
# RGGI CO<sub>2</sub> Emissions

## High Emissions Reference Scenario with and without MA



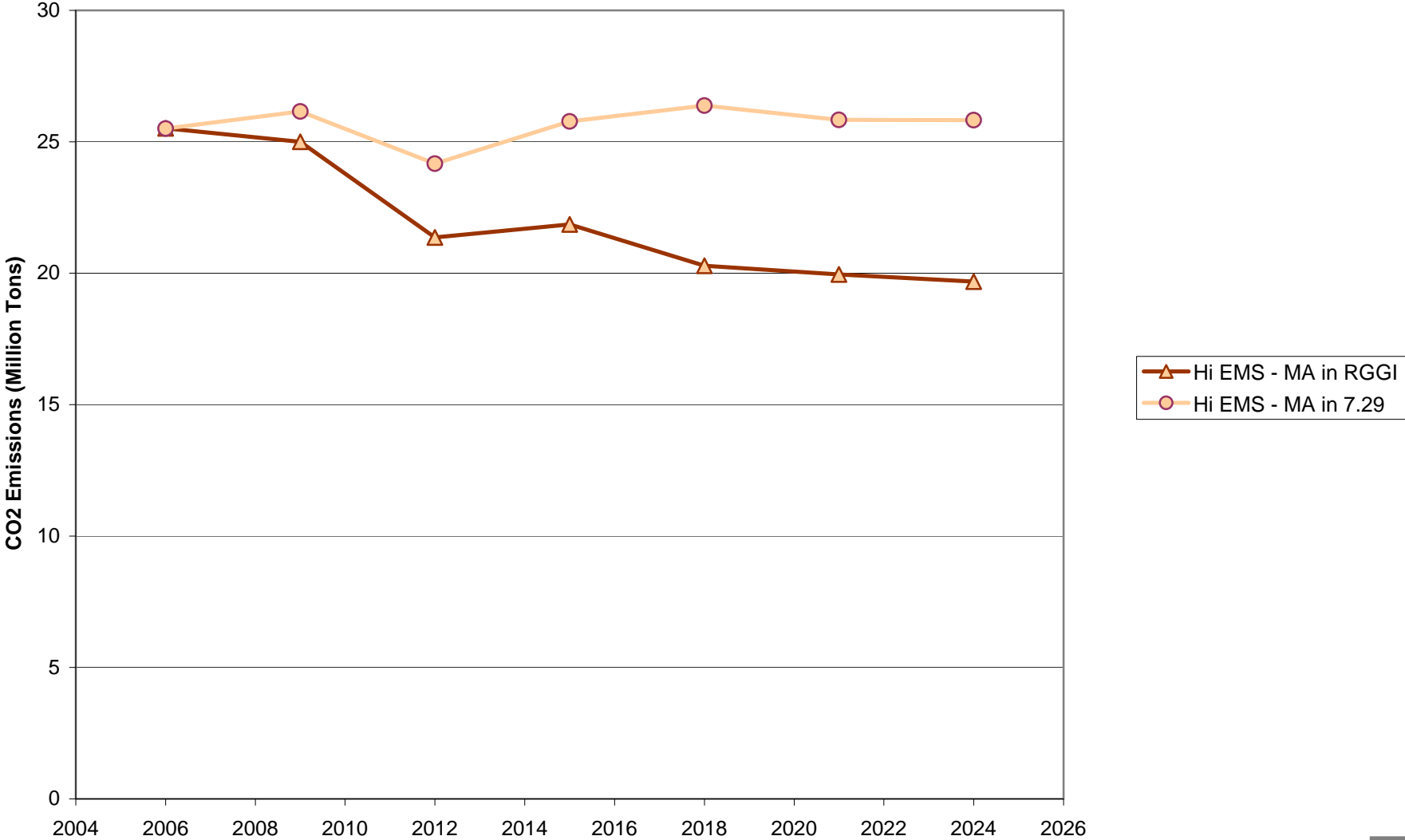
# MA CO<sub>2</sub> Emissions

## Package Scenarios (Not Accounting for Offsets)

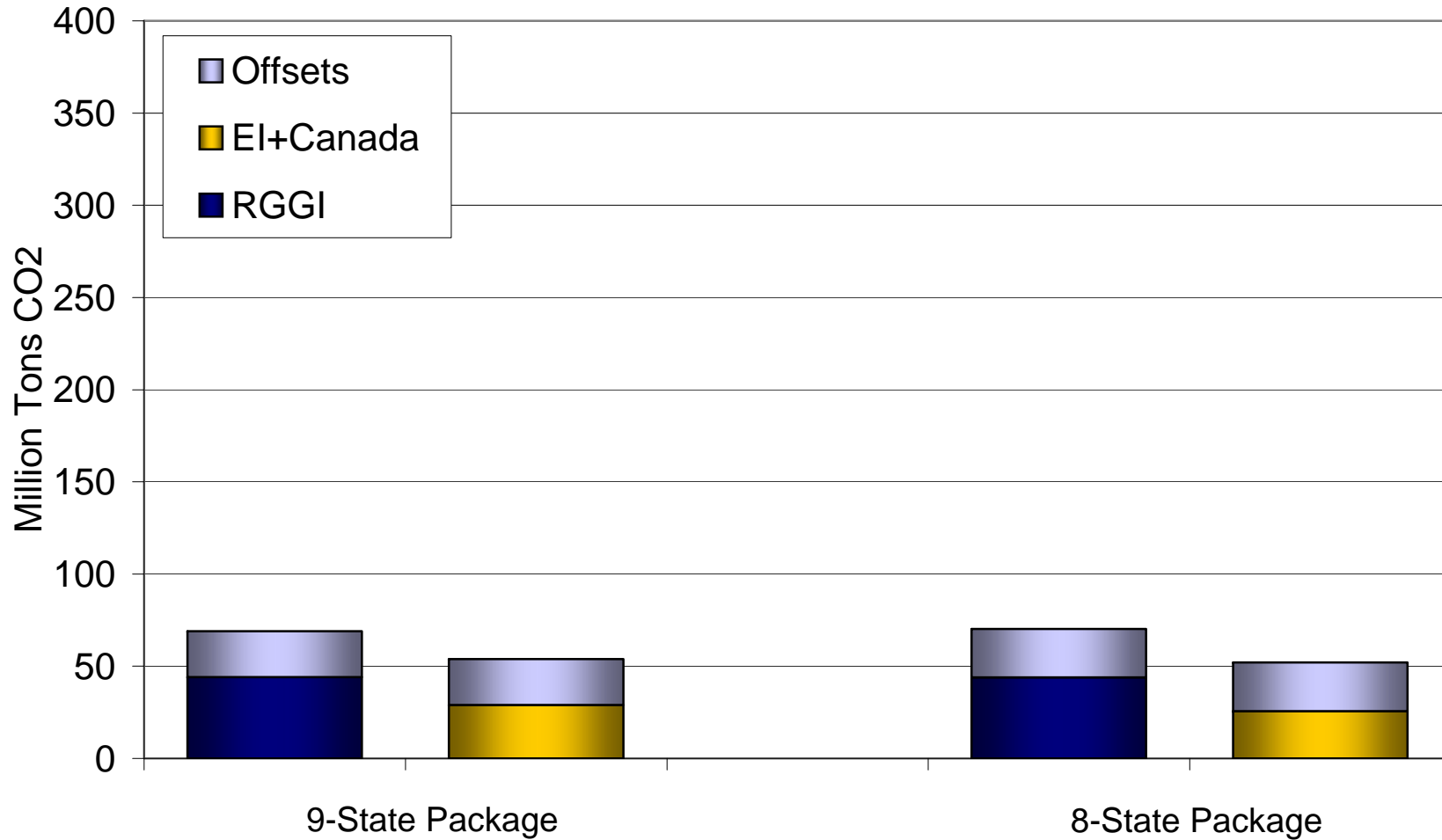


# MA CO<sub>2</sub> Emissions

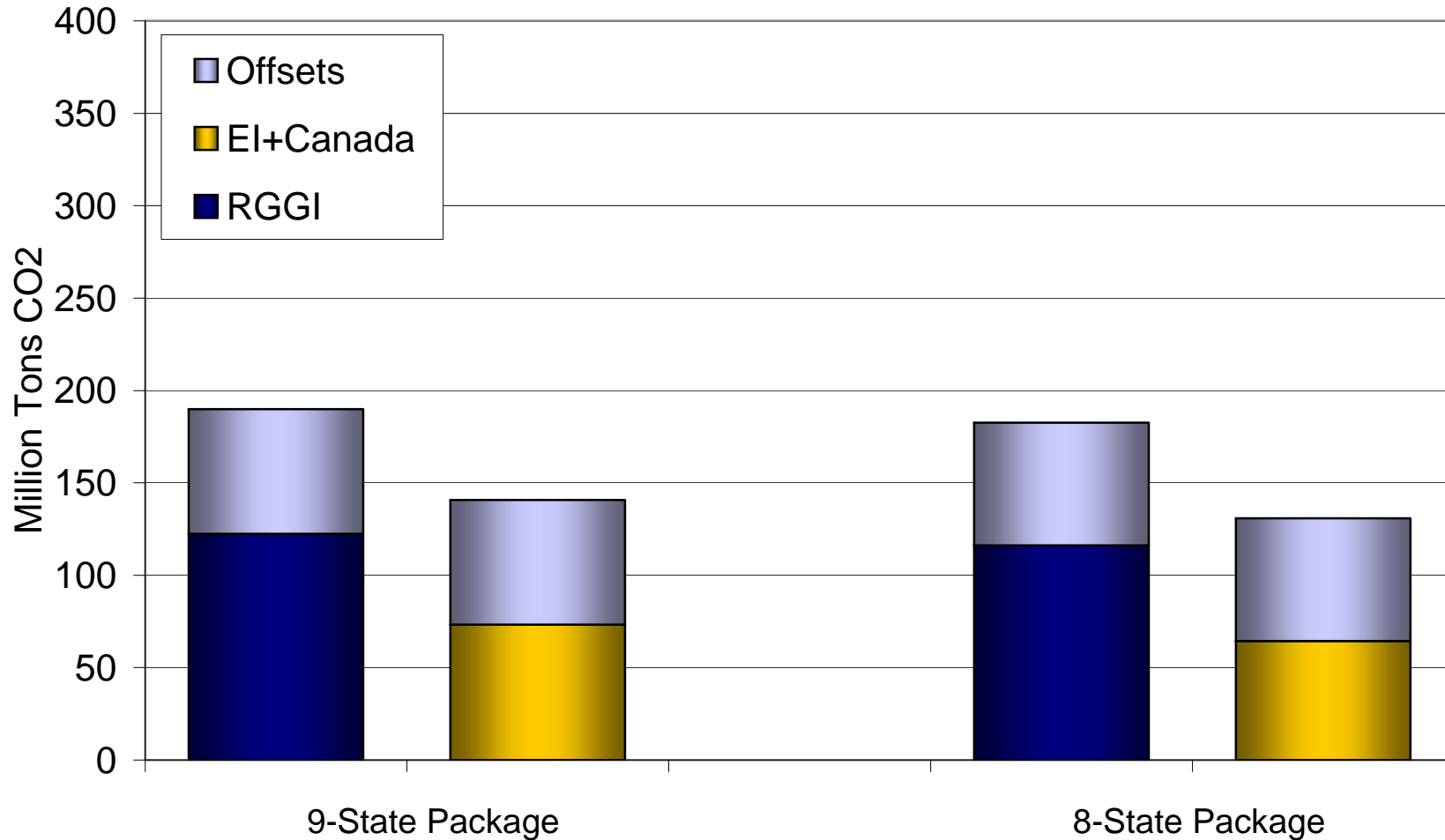
## High Emissions Scenarios (Not Accounting for Offsets)



# Cumulative CO<sub>2</sub> Reductions by 2015 (from Std. Ref.) RGGI and Eastern Interconnect/Canada

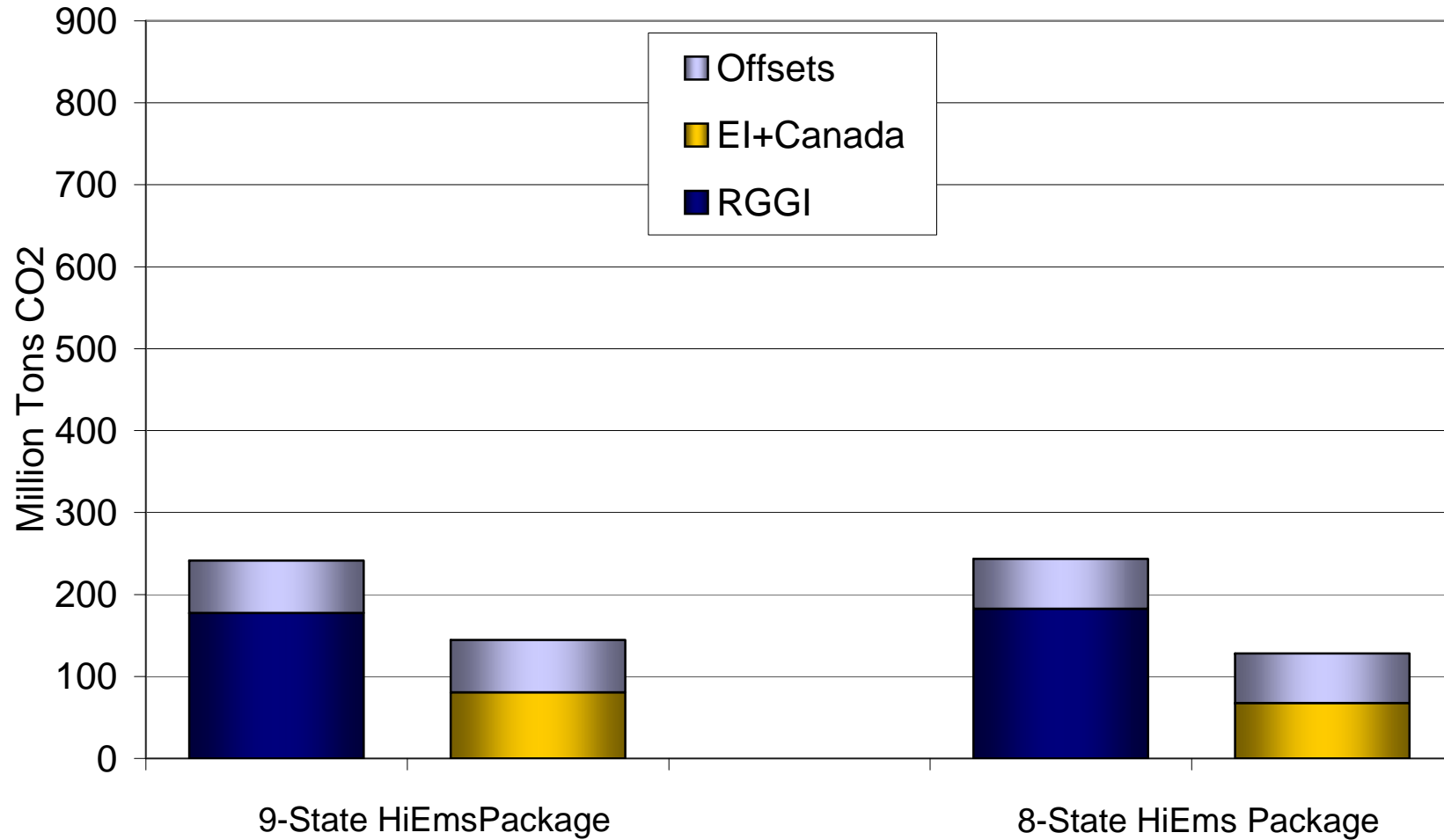


# Cumulative CO<sub>2</sub> Reductions by 2021 (from Std. Ref.) RGGI and Eastern Interconnect/Canada





# Cumulative CO<sub>2</sub> Reductions by 2015 (from HiEms Ref.) RGGI and Eastern Interconnect/Canada



# Cumulative CO<sub>2</sub> Reductions by 2021 (from HiEms Ref.) RGGI and Eastern Interconnect/Canada

